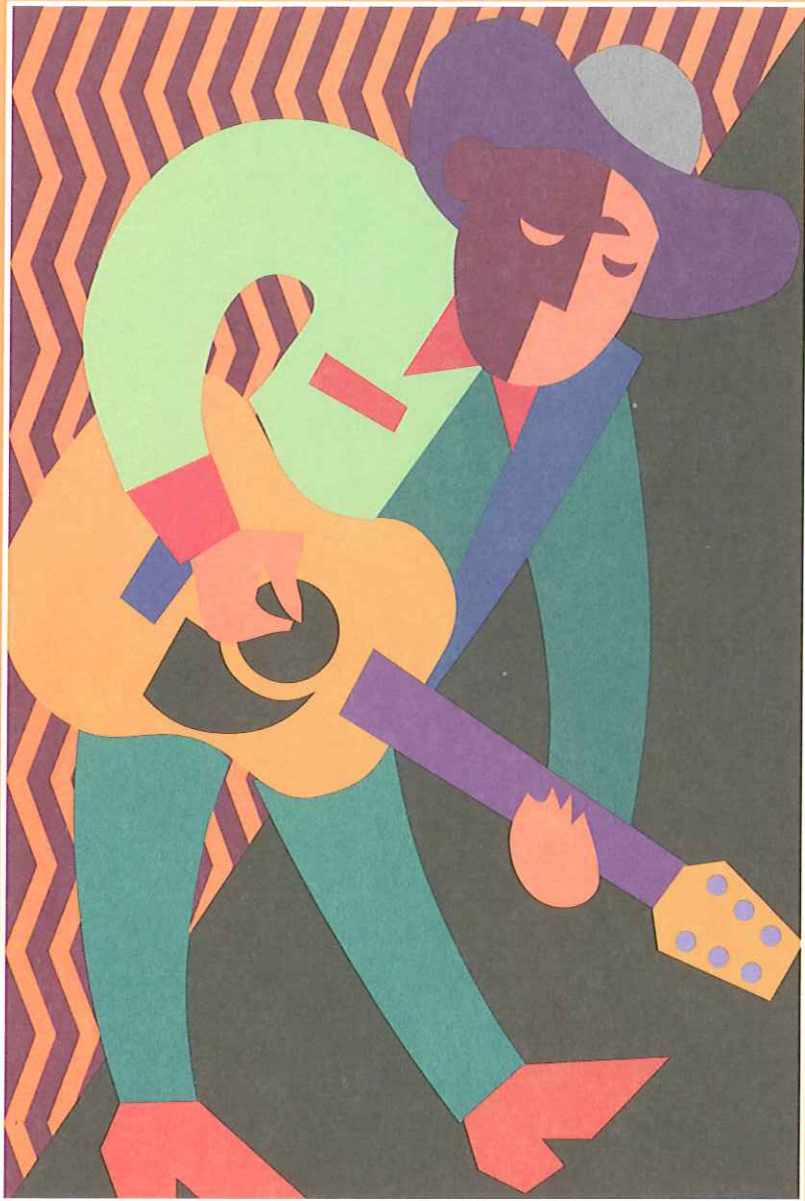


COUNTRY JAMMIN'?



with

Brenda Liles & Cripple Creek

THURSDAY,
JUNE 28, 2012
7:00 - 10:00 p.m.

Please bring a covered dish
to share at 6:30 p.m.

Bixby Community Center • 211 N. Cabaniss • 918-366-4841

Sponsored by the Bixby Community Center Council, Inc. & the Tulsa County Parks Department

